



ALPHARECYCLAGE  
COMPOSITES

 CUSTOMISIZE

Workshop 08/10/2019 | Recycling of carbon fibres by steam water thermolysis

**Serge Da Silva – R&D Director**  
s.dasilva@alpharecyclage.com

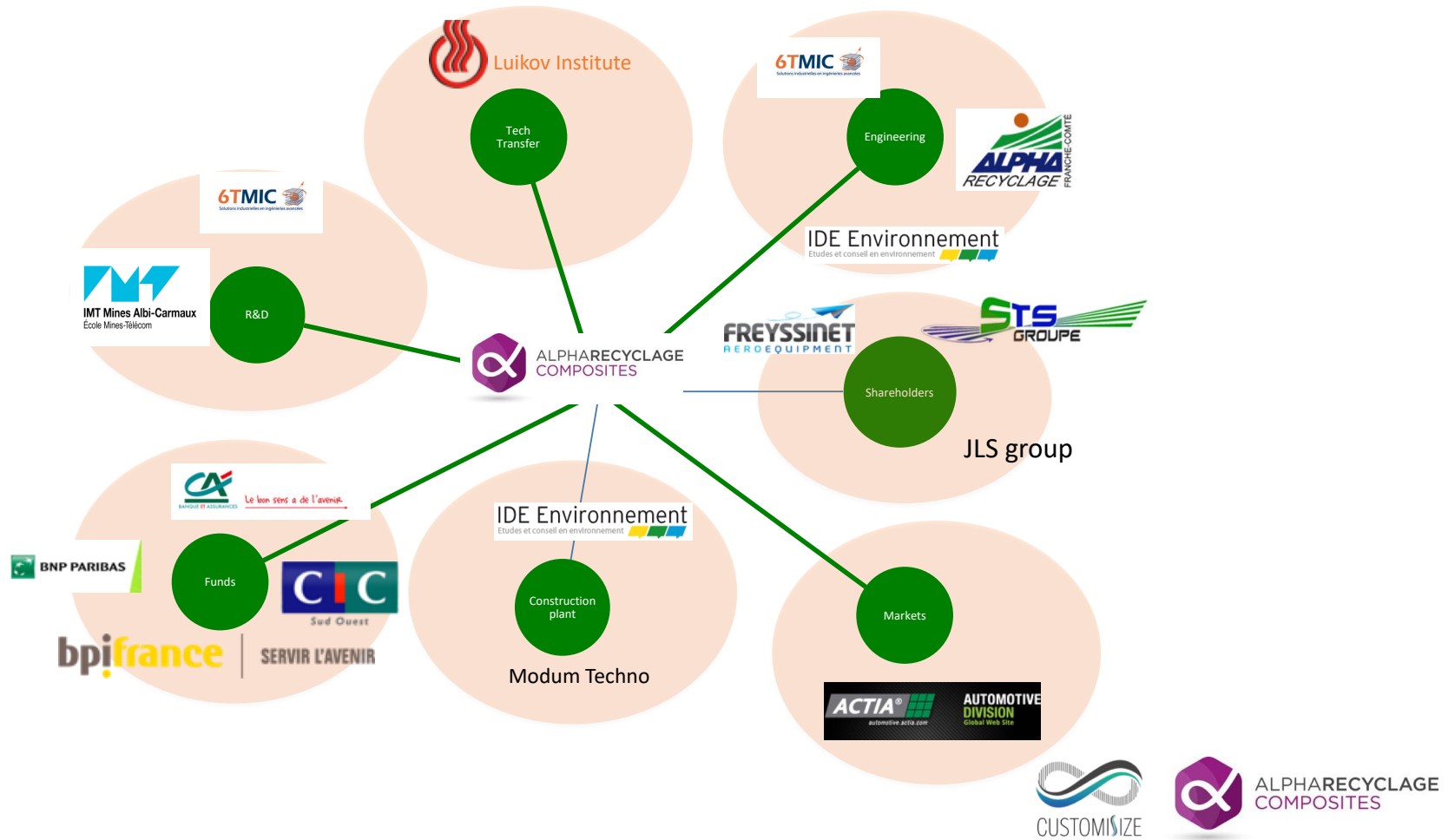


This project has received funding from the Clean Sky 2 Joint Undertaking under the European Union's Horizon 2020 research and innovation programme under grant agreement No 831858. This publication reflects only the author's views and the European Union is not liable for any use that may be made of the information contained therein."

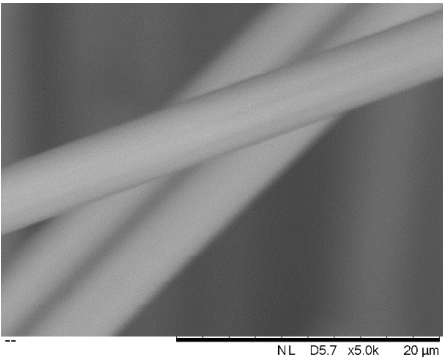
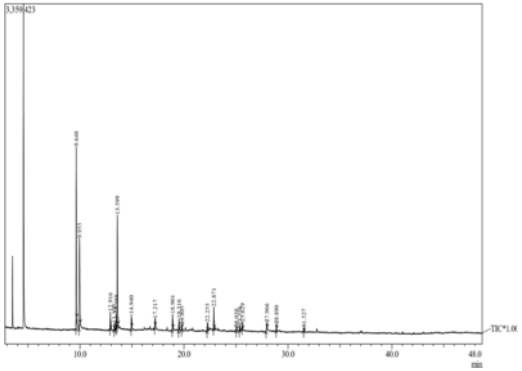
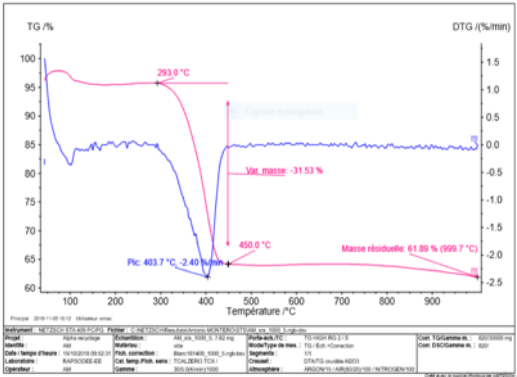
# 1. Company presentation



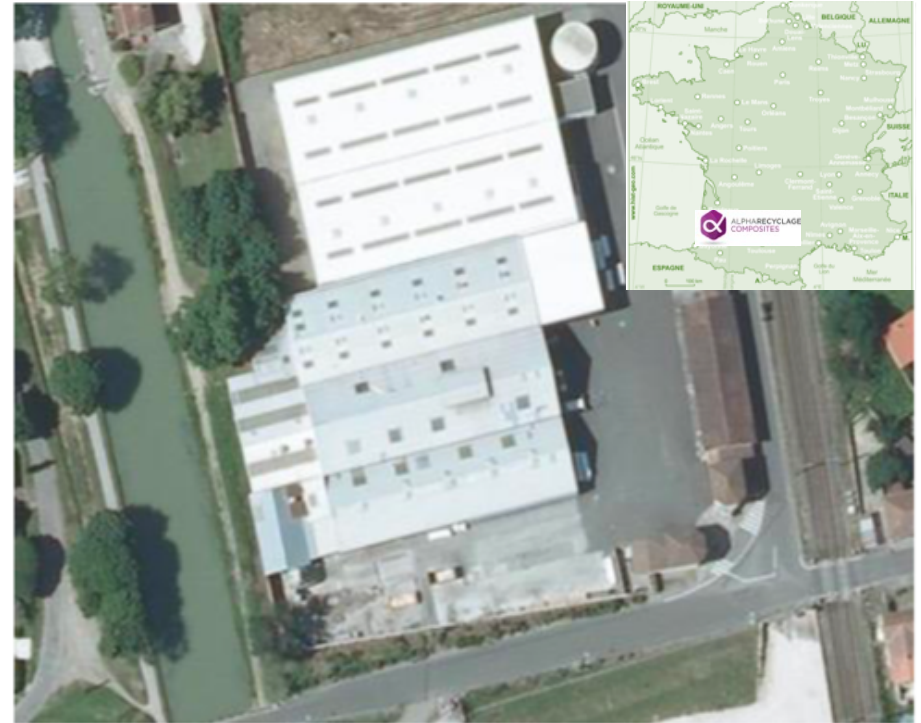
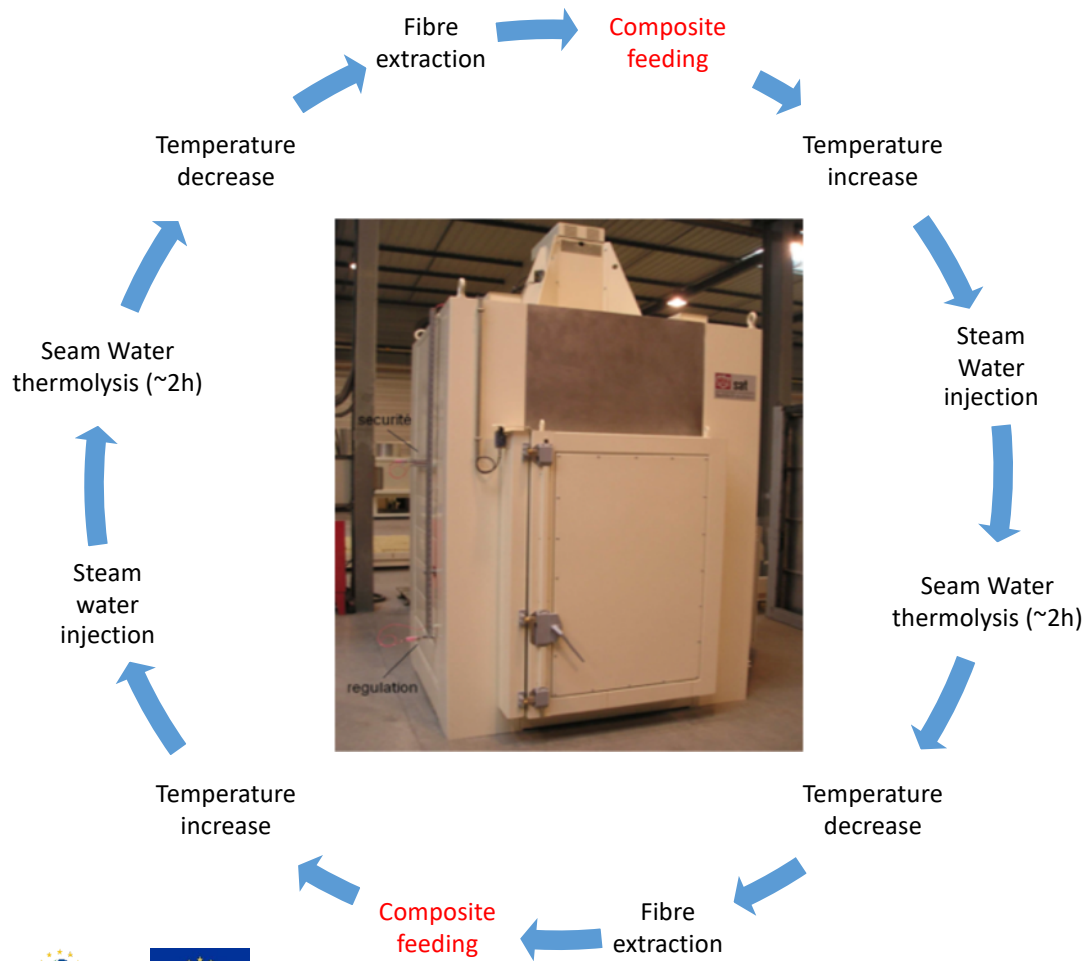
# A SME in an industrial environment



# A joint lab with R&D centres



# A 2 tons per day reactor available....



Implantation site of Steam Water Thermolysis unit for Composite in Castelsarrasin (France)



... now and in operation at the end of 2019

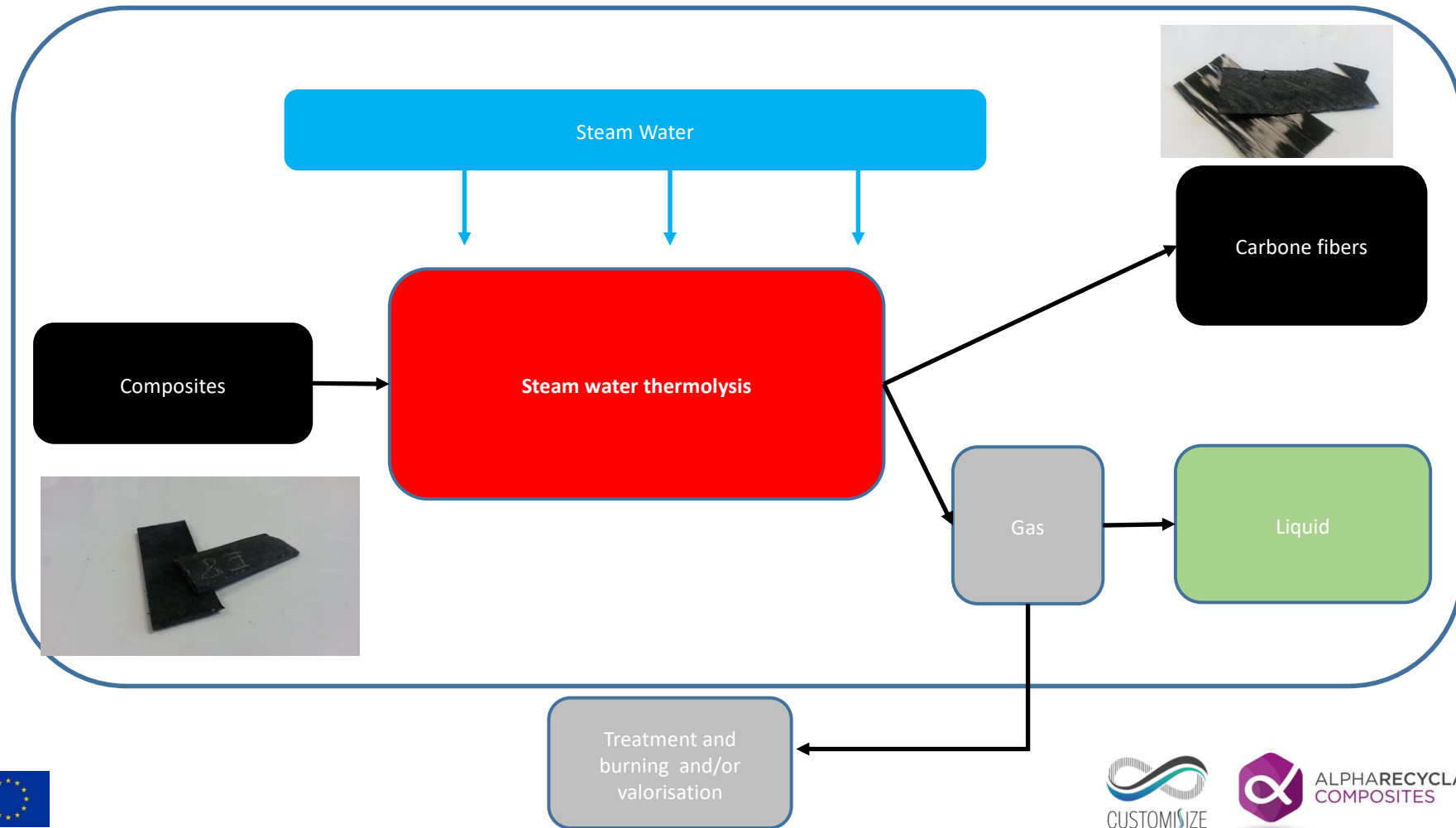
Confidential pictures



## 2. Technology presentation



# The steam water thermolysis principle

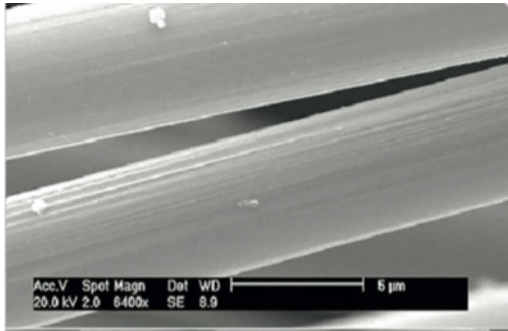




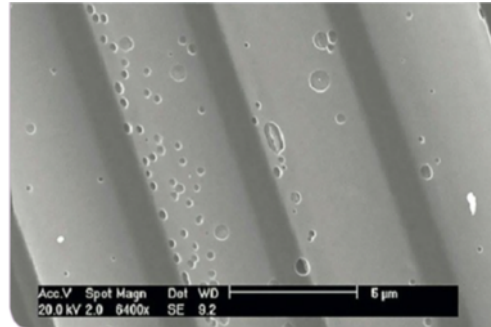
# Steam water thermolysis advantages

PA6 reinforced by carbon fibres\*

Same parameters



Steam water thermolysis



Pyrolysis

Activation energy of PA6\* degradation (kJ/mole)

	Steam water thermolysis	Pyrolysis
Kissinger	$175 \pm 5,0$	$232 \pm 11,0$
IKP	$178 \pm 1,5$	$186 \pm 4,0$

\* A.O. Nunes – PhD thesis – November 2015

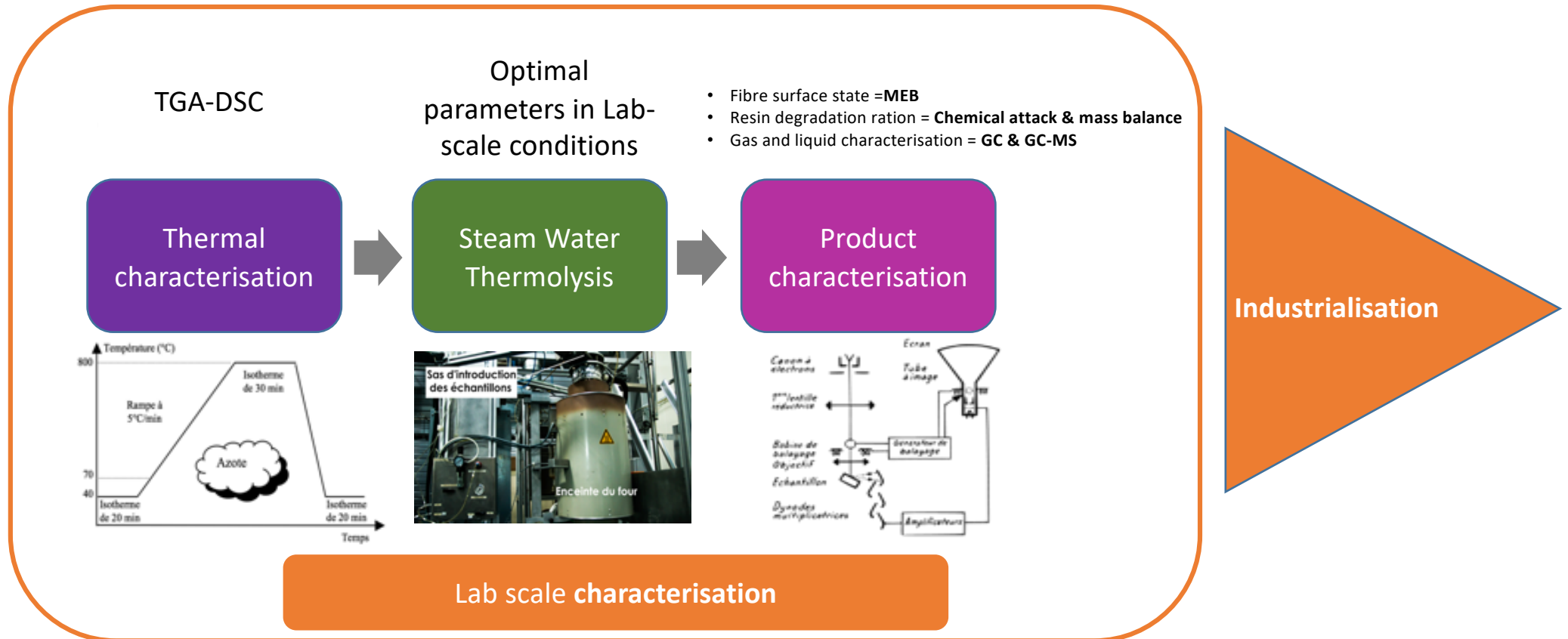
## Steam water thermolysis vs. pyrolysis

- Safer process
- Higher thermal transfer
- Catalysis by water

## 3. Some technical cases



# Waste qualification - Methodology



# Example of wastes

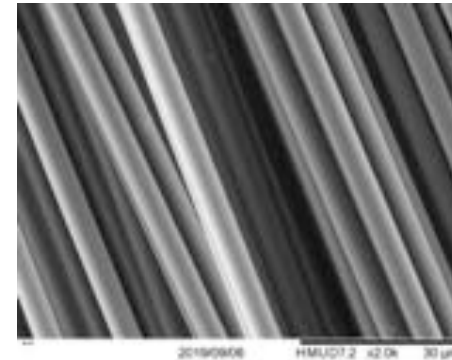


# Example of material

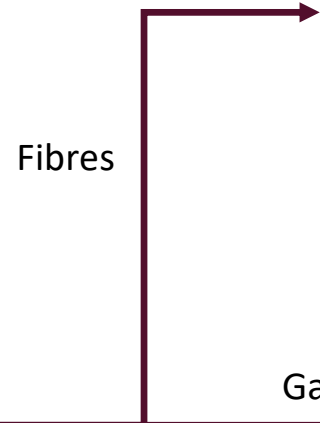


- From an aeronautic
- M21 prepreg
- 2 mm thick

Up to 92,3 % (w/w) of resin elimination



Steam Water Thermolysis :  
400 – 600 °C



In progress

Liquids

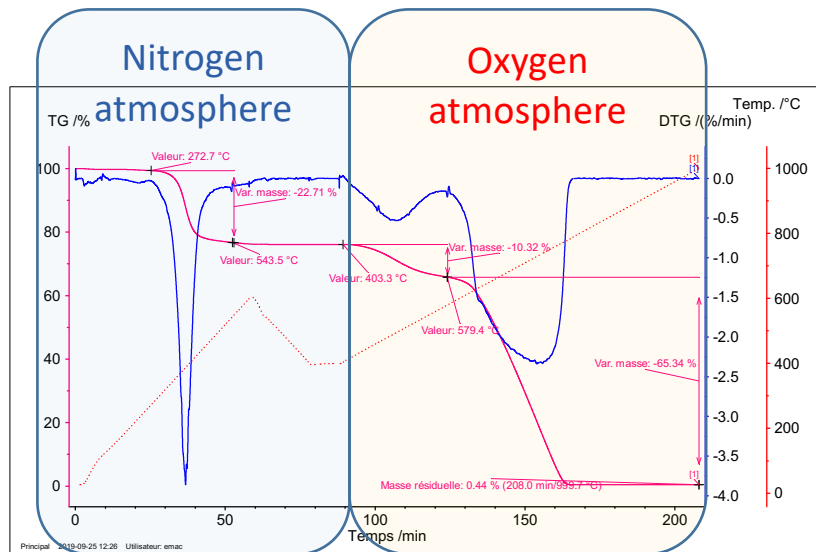
In progress



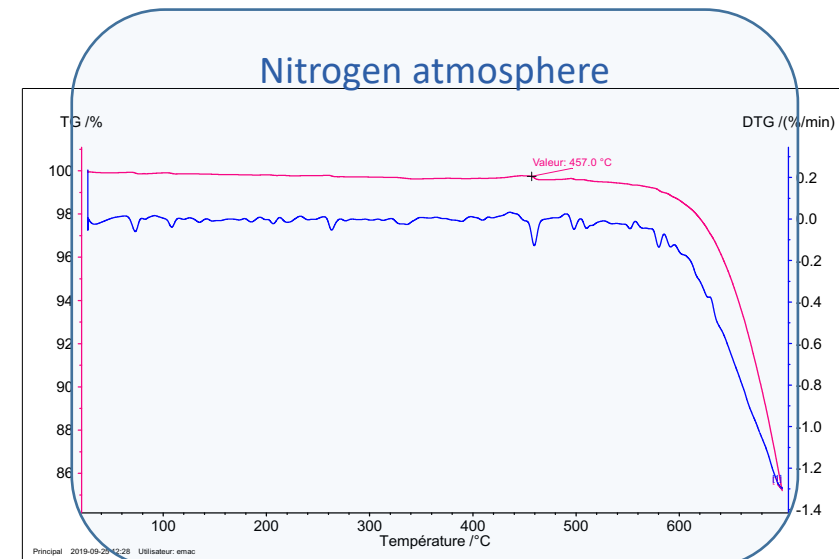
# Example of material



- From an aeronautic company
- M21 prepreg
- 2 mm thick



TGA of prepreg before the Steam Water Thermolysis



TGA of fibres after the Steam Water Thermolysis

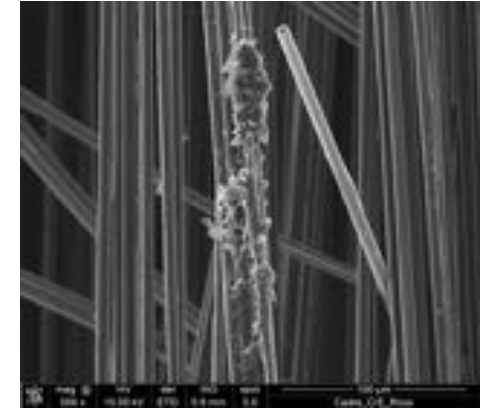
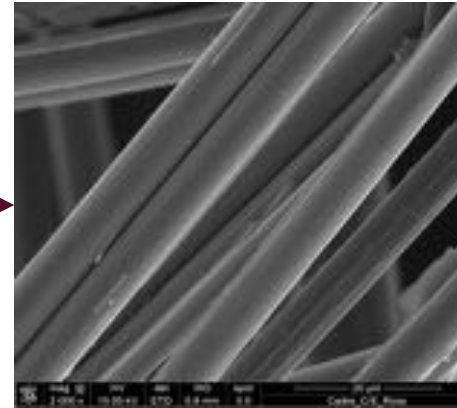
# Example of material



- **Rossignol (Look)**
- Epoxy resin
- 3 mm Thick

**96,8 % (w/w) of resin elimination**

Fibres



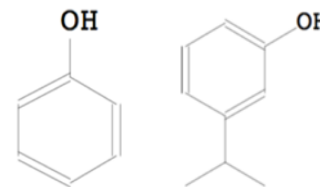
MEB pictures x 2000 et x 500

Gases

**CO<sub>2</sub>, CO, H<sub>2</sub>, C1-C4**

**Steam Water Thermolysis :  
400 – 600 °C**

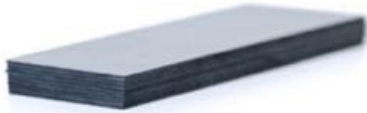
Liquids



**Phenolic molecules (85%vol)**

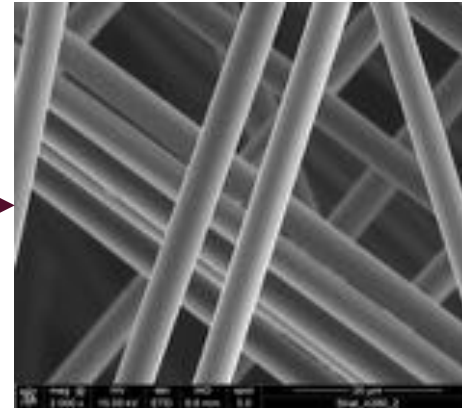


# Example of material



- **Omega Systèmes**
- Epoxy resin
- 8 mm thick

99,7 % (w/w) of resin elimination



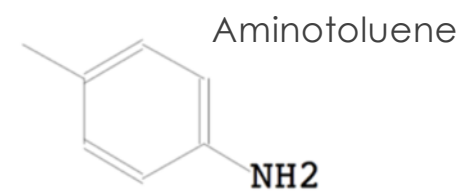
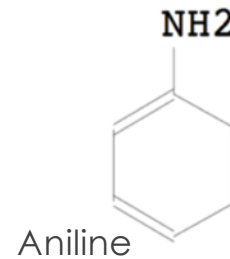
Fibres

Gases

CO<sub>2</sub>, CO, H<sub>2</sub>, C1-C4

Steam Water Thermolysis :  
400 – 600 °C

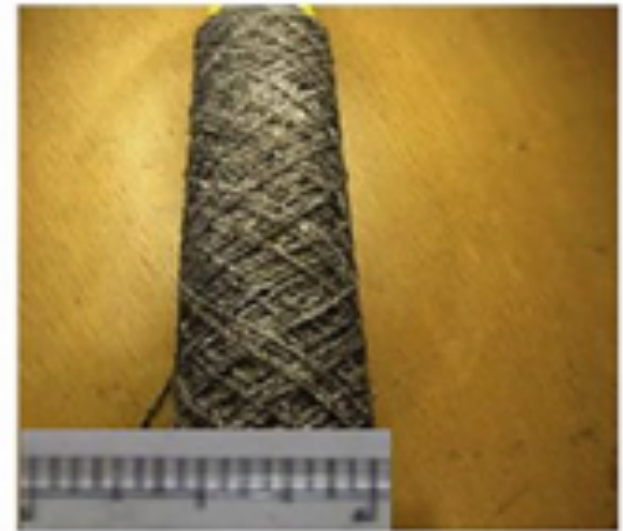
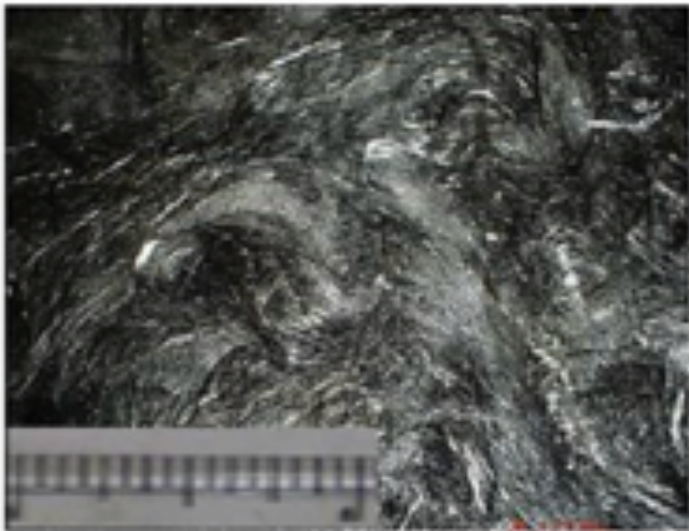
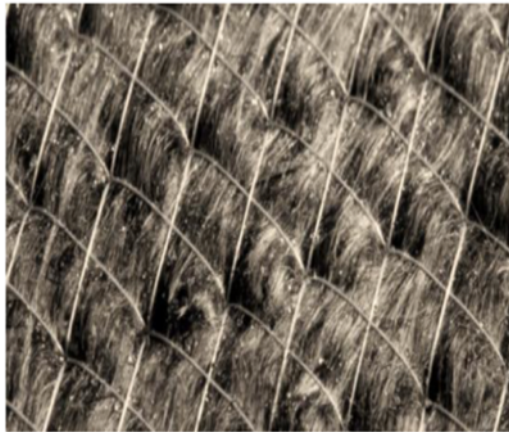
Liquids



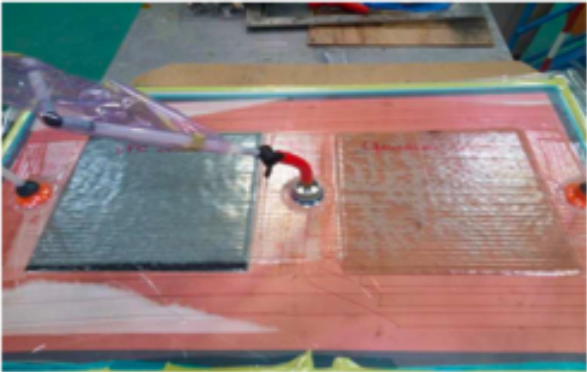
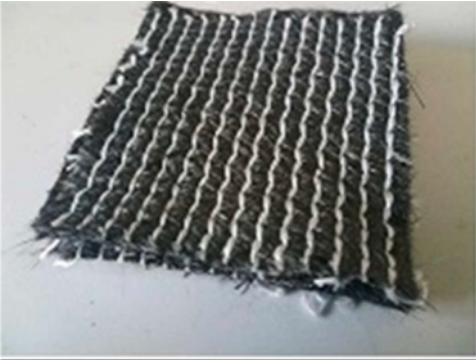


## 4. Some applications





# Mechanical properties of non-woven and stitched non-woven rCF composites compared to glass fibre 4 axes



Epoxy resin

# Results

To be continued ....





CUSTOMISIZE

Thanks for your attention

Merci pour votre attention

Gracias por su atención